

# BASE (Bielefeld Academic Search Engine)

## - a Next Generation Multi-Level Repository-based Service Provider

base.ub@uni-bielefeld.de - Bielefeld University Library

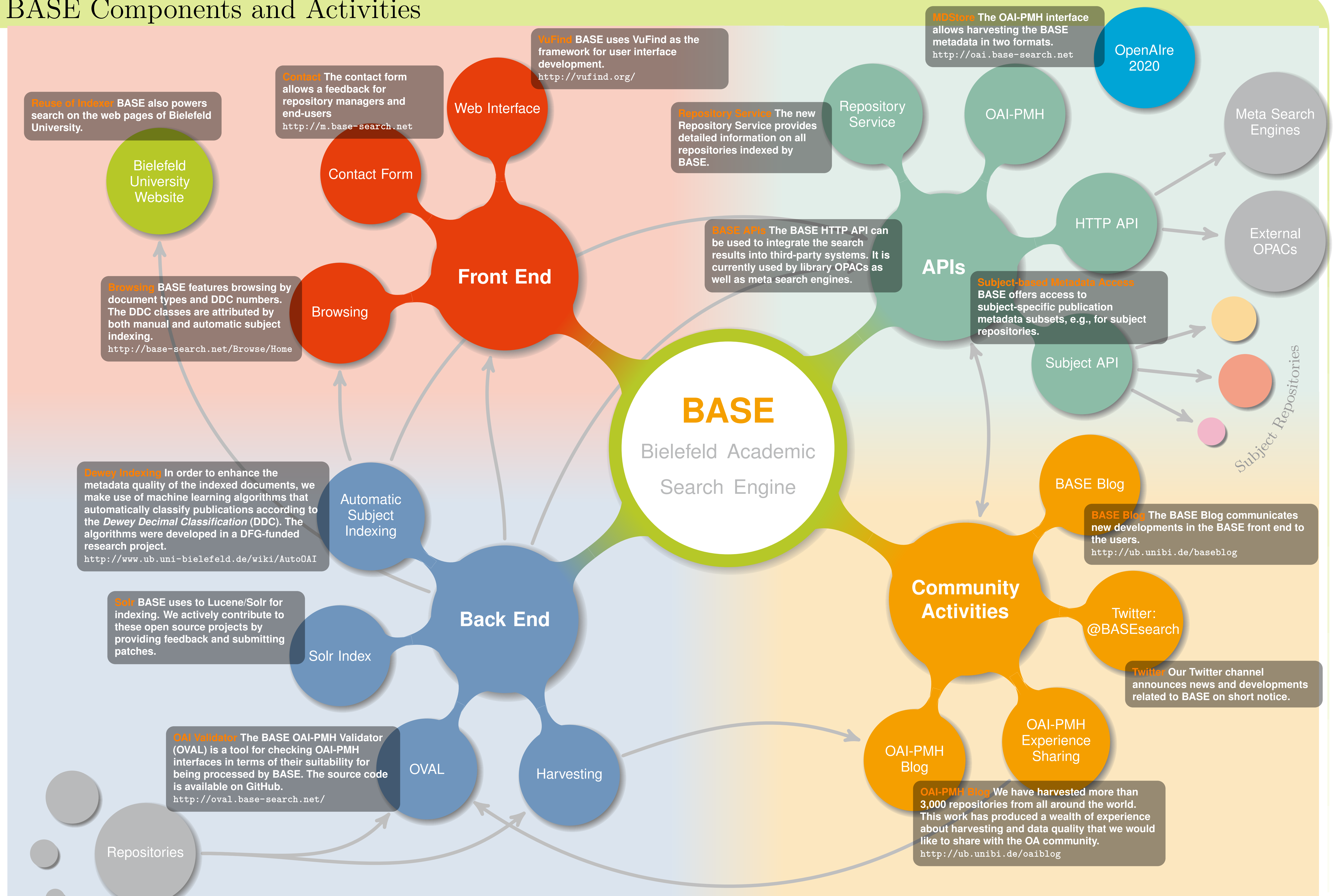
### Introduction

BASE (short for Bielefeld Academic Search Engine, <http://www.base-search.net>) is one of the largest search engines for academic open access content. BASE is harvesting, aggregating, normalising and enriching OAI metadata from repositories all over the world, and is acting as an OAI service and data

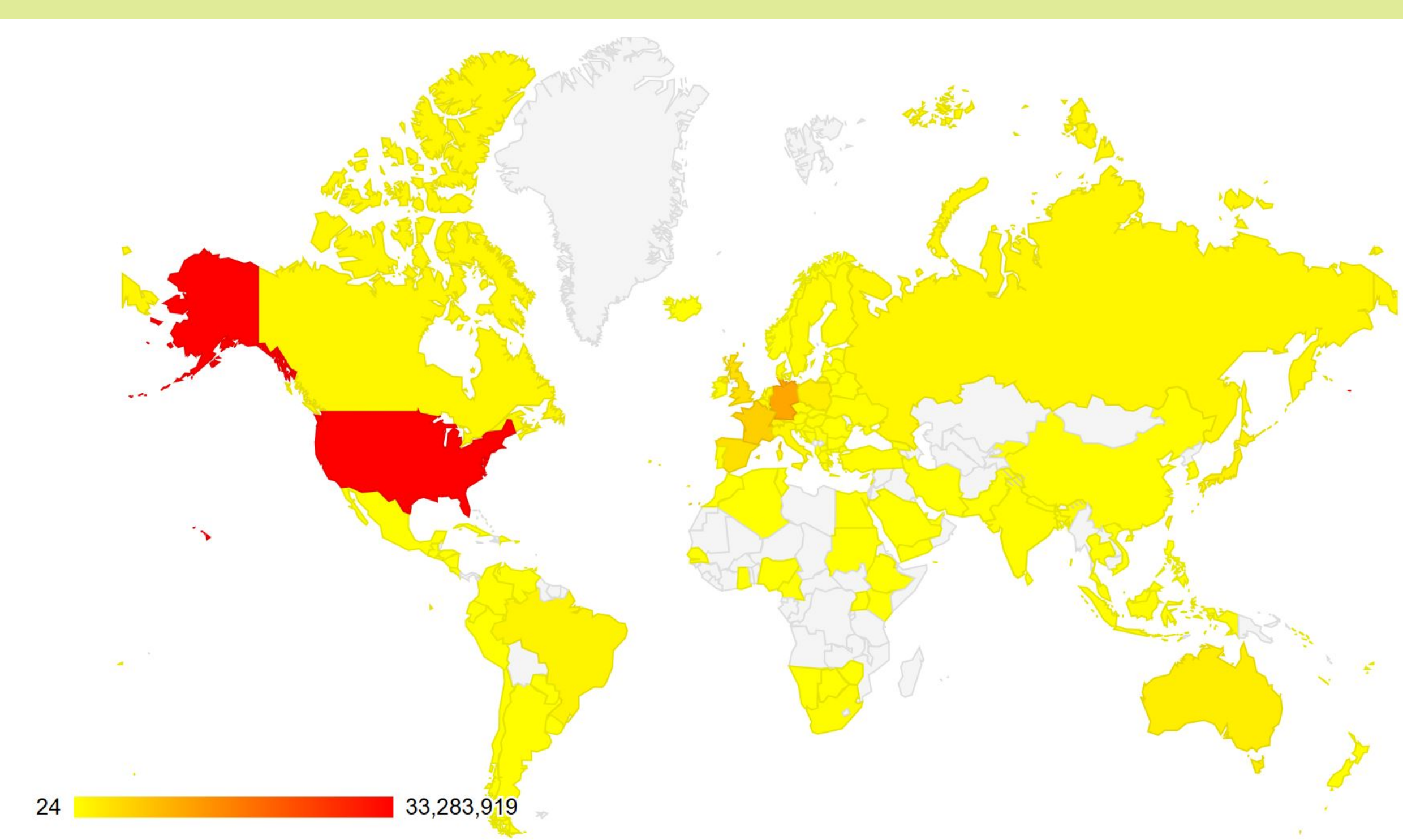
provider at the same time. Bielefeld University Library has been operating and developing BASE since 2004 with a small but efficient project staff. BASE has switched to free and open source software (Lucene Solr, VuFind) in 2011. Bielefeld UL's expertise in search engine technology and OAI metadata harvest-

ing gained through BASE prepared the ground for several projects, project participations and invitations to expert committees. Today BASE plays an outstanding role within the global repository landscape and network based on sharing and exchanging services, information and metadata.

### BASE Components and Activities



### BASE Fact Sheet



- > 90 million documents indexed
- from > 4,195 repositories
- from > 100 countries
- metadata aggregation and enrichment
- multilingual search
- OAI interface, search APIs

### The BASE Team

- Dirk Pieper** Deputy Director and BASE project coordinator
- Friedrich Summann** Head of LibTec
- Amelie Bäcker**
- Christoph Broschinski**
- Bernd Fehling**
- Urte Kramer**
- Renata Mitrenga**
- Christian Pietsch**
- Jochen Schirrwagen**
- Sebastian Wolf**



[www.base-search.net](http://www.base-search.net)

The global repository network as indexed by BASE